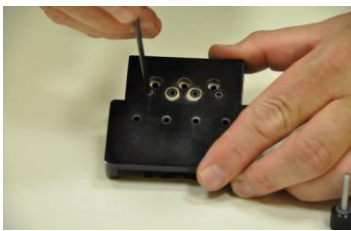




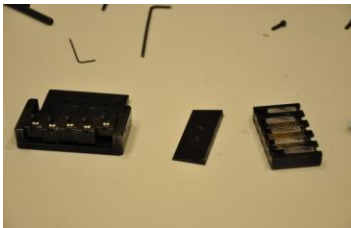
Step 1:
After removing the bridge, remove the existing jaws along with the tuning knobs and screws.



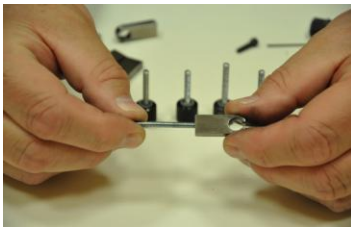
Step 2:
Note, some jaws have screws that must be removed through the ball end of the jaw, if this is the case then the knob must be removed. Loosen the set screw first and unscrew the knob from the screw.



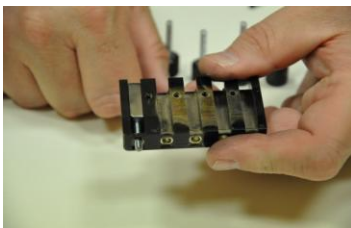
Step 3:
Remove the four screws that secure the jaw housing to the base plate.



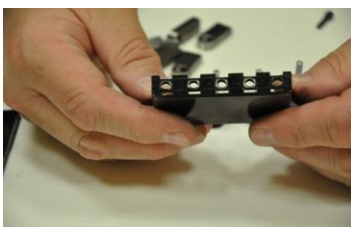
Step 4:
Separate the jaw housing and the angle plate from the bridge base plate. It is not necessary to remove the saddles from the base plate.



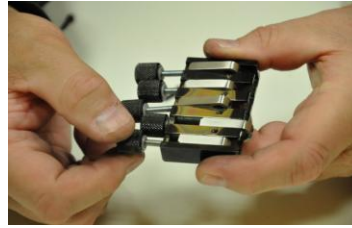
Step 5:
Insert the new jaw screw into the new jaw. The jaw and screw assembly will be used to test the clearance of the jaw screw shaft and the hole in the housing back plate.



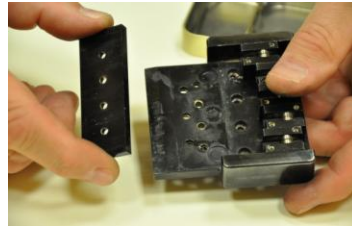
Step 6:
The jaw and screw assembly should glide freely through the hole in the back plate. Test jaw assembly in every jaw channel.



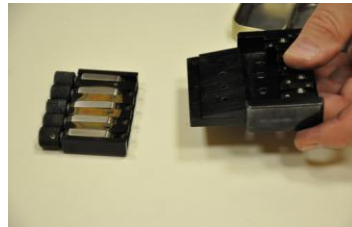
Step 7:
Note, it maybe necessary to use a small rat-tail file to increase the size of the opening so that the screw shaft can freely pass through the hole in the back of the jaw housing. Caution, remove as little material as possible.



Step 8:
Install all of the jaw assemblies in the jaw housing.



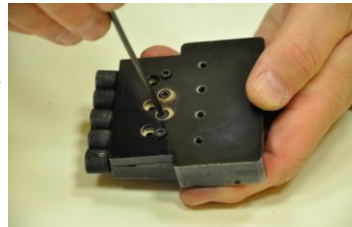
Step 9:
Reassemble the bridge. First place the angle plate on the base plate.



Step 10:
Assemble the jaw housing assembly on top of the angle plate and the base plate



Step 11:
Hold the complete bridge assembly firmly and make sure all of the holes are aligned so that the four retaining screws can be installed.



Step 12:
Holding the bridge assembly firmly, install the four retaining screws.



Step 13:
The bridge assembly is complete and ready to be installed on the bass.

Steinberger Narrow 5 Bridge Assembly